

EARL PALMER MINISTRIES

1 Thessalonians 5:11

Serving to Encourage and Build Up in Christian Faith

Winter 2012

On Earl's Calendar

In Seattle

The Kindlings Muse Podcast*

Feb. 6: 7 - 8:30 p.m. (Walker-Ames Room, Kane Hall, UW)

A New Look at Christian Apologetics

Mar. 5: 7 - 8:30 p.m.

What About Miracles?

Mar. 16: 7 - 8:30 p.m. (First Presbyterian Church, Berkeley)

My Heart, Christ's Home: Remembering Robert Boyd Munger

Apr. 2: 7 - 8:30 p.m.

Fully God, Fully Man: The Meaning of Holy Week

Theological Dialogue*

Letters and Papers from Prison by Dietrich Bonhoeffer

Feb. 1: 9 - 11 a.m.

Mar. 7: 9 - 11 a.m.

Apr. 4: 9 - 11 a.m.

Word & Worship*

The Highlands Chapel

February 16, March 15 & April 26 at 7 p.m.

University Presbyterian Church Worship Services

May 6 & May 13

8:30, 10 & 11:30 a.m., 5 & 7 p.m.

Around the Country

Midshipmen Retreat

Annapolis, MD

Jan. 14 - 16

National Presbyterian Church Wednesday Night Study

Jan. 18, 7 p.m.

St. John the Theologian

Class at New College Berkeley

First Presbyterian Church, Berkeley

St. Paul's Last Letter: II Timothy

March 17, 9 a.m. - 4 p.m.

Laitiy Lodge Retreat

April 13 - 15

First Presbyterian Church Bellingham

Sunday Worship

May 27, 9:30 & 11 a.m.

Cities of St. Paul

Turkey & Greece

June 21 - July 2

*Contact info@earlpalmer.org for more information on this event, or go to www.earlpalmer.org/calendar.

I've been thinking ...

On November 11, 2011 a memorial service was held in Wheaton, IL to remember and thank God for the life of John R. W. Stott. I was personally struck at that service by how much I owe to this great man for his enduring influence upon my own life. John Stott was a Church of England curate of All Souls Church in London, but he was a pastor with the world on his heart who, through his expositional teaching and his presence, impacted the whole church. John was a quiet and yet whimsical man totally without pretense; he taught the Gospel from its living center outward to the edges and boldly challenged Christians to live out the gospel into the concrete edge places where our lives are placed. He was first of all a man in Christ, and it was that Christ-centered life and message that gave him his credibility. This past year in one of our Kindlings Muse events we focused on that centered faith of John Stott and especially his book *Basic Christianity*.

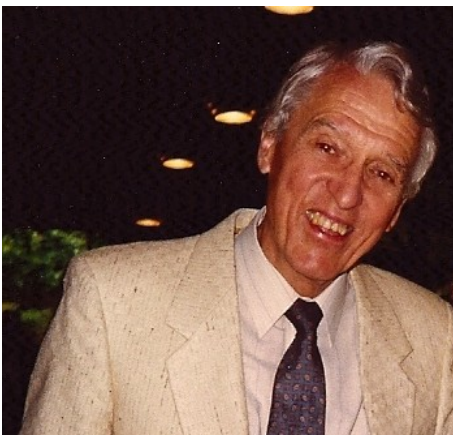
Robert Boyd Munger was very much like John. Dr. Munger's longest ministry was at First Presbyterian Church of Berkeley immediately after World War II, followed by UPC in Seattle, and his final years at Fuller Seminary. When I was a sophomore at UC Berkeley in 1951 I became a believer in Jesus Christ, and it was the wise biblical preaching of Dr. Munger that helped me decide to trust in Christ. It was at Berkeley where Dr. Munger preached his most famous sermon, "My Heart - Christ's Home." A sentence of his became a life resolving one for me. Dr. Munger put the issue of faith this way: "When on the basis of what you now know about Jesus Christ, if you are willing to trust in his trustworthiness, then you are ready to become a Christian." (Robert B. Munger, 1951 Student Conference at Lake Tahoe, CA) Both of these men pointed with honesty and earnestness to the Lord Jesus Christ - he did the rest. Dick Staub and I look forward to March 16 when at First Presbyterian Church Berkeley we will present a Kindlings Muse, during which we will reflect on the trustworthiness of Christ theme in the ministry of Robert Munger.

John Stott and Robert Munger were both reserved, always respectful of those who they met, and therefore able to really connect with people heart to heart and mind to mind.

Both had unshakeable integrity of character, both were missionary pastors at heart, both were alert to the needs of the world, and both loved people. As a pastor and as a person, my goal is to be faithful as they were. At the beginning of 2012 the mandate they modeled continues for us at EPM, whether it is a Kindlings Muse evening, or at the three Word and Worship times in February, March, and April, or while I am with the Annapolis Midshipmen for a weekend retreat this January. Best of all, it is in the most ordinary of places where we discover the trustworthiness and goodness of Christ.



Rev. John R. W. Stott



Dr. Robert Boyd Munger

~ Earl F. Palmer

WORD & WORSHIP : A THREE PART SERIES ON ENCOUNTERS WITH JESUS IN THE GOSPEL OF JOHN

February 16: *The Healer* | March 15: *The Good Shepherd* | April 26: *The Good News of the Narrow Way* — All services will be held from 7 to 8:15 PM at the Highlands Chapel

In the visual arts, white space is intentionally left blank to accentuate other content. Worship for me, is creating that type of space in my life and in my heart for God. It is about pouring out my gratitude for the grace and generosity I've received. Worship is pure. It takes nothing. It wastes nothing. It extends beyond as far as I can see. As I worship, my anxiousness is displaced with insight, urgency with perspective, and intolerance with compassion. Worship sends me back into my life, changed. Earl has a contagious way of connecting us with the joy of our faith and the generosity of our God—something we can never get too much of.

So, we're excited about the Thursdays in February, March & April. **Word and Worship**, hosted by Earl Palmer Ministries, will be a three part series, from 7pm - 8:15pm at The Highlands Chapel. It is a time for us to come together, hear from Earl, and worship—music led by Walt Wagner, Sue Nixon and friends.

~Sue Nixon, EPM Board Member

It is open to all. We hope to see you there! **Questions? Contact sue@ardent-sage.com**

"For where two or three come together in my name, there am I with them" Matthew 18:20

EARL LIVE IN BERKELEY!

MARCH: 16 — First Presbyterian Church of Berkeley hosts a special Kindlings Muse event. Join Earl and Dick Staub as they honor longtime Berkeley pastor Robert Boyd Munger.

Event is 7 - 8:30 PM

Register at www.thekindlings.com

17 — Annual class at New College Berkeley. Earl will be teaching on the topic *St. Paul's Last Letter: II Timothy*.

Event is 9 AM - 4 PM, Lunch Included

Register at www.newcollegeberkeley.org

Earl is extremely excited to be back at his old congregation at FPCB, don't miss this opportunity to connect with him!



Earl lecturing at NCB, March of 2011



University of Washington
Walker-Ames Room
in Kane Hall

February 6

A New Look at Christian Apologetics
The Reason for God, Timothy Keller

March 5

What About Miracles?
Peace Like a River, Leif Enger
Miracles, CS Lewis

March 16

My Heart, Christ's Home: Remembering the
Trustworthy Witness of Robert Boyd Munger

April 2

Christ, Fully God and Fully Man:
The meaning Of Holy Week
Dogmatics in Outline: Karl Barth

To attend a live event, register at:
www.thekindlings.com/events

Each event is podcast and made
available to download at:
www.earlpalmer.org
Under "Resources"

New Venue for The Kindlings Muse

In response to a need for more space, we are moving the Kindlings Muse to a new venue on the University of Washington campus just down the road from the Burke Museum to Kane Hall in the Red Square. The Walker-Ames room is on the second floor of Kane Hall. Parking is available under the building, with an elevator that goes directly to the second floor. To access the parking garage, use the 15th Ave main entrance. You can also continue to park at the Burke Museum and take a short walk down the road. If you have questions concerning directions, feel free to email info@earlpalmer.org, or ask the friendly person at the gate to campus.

At Home with Earl

Although Earl and I have undertaken a few journeys in the past few months, we have spent most of our time here in Seattle, and it is this time I have enjoyed most. In morning meetings that turn into afternoon discussions, Earl and I sit and talk about Bonhoeffer, Barth, St. Paul, the Prophets, or the New York Times. The Theological Dialogue group meetings have also provided wonderful discussions about faith and scripture. It is a reminder to me of how rich fellowship can be when we take advantage of the community around us. Something I have thought on often lately is the way scripture seems to be infinitely inexhaustible. When Earl and I get locked in on a discussion of scripture, it never ceases to amaze how engaging and new it is every time. Even the old or familiar texts are never fully explored, like walking a landscape in different seasons. This is especially striking for me as I watch Earl, a man who has studied them for the better part of his life, pour over these texts with a youthful, wide-eyed curiosity. It is my hope that many years from now I can look at scripture with this same love.

One of our latest developing ministries at EPM rises out of this very idea—that scripture is worth look at consistently in new ways.

This has led to the forthcoming creation of “Word of the Week,” a new way for everyone to take advantage of Earl’s teaching. It is going to be a devotional blog, updated every a week, that provides a brief in-depth study of an important biblical term or concept. It will be like having Earl preach once a week again. And fear not, you won’t have to rely on the current www.earlpalmer.org to access these studies. In the near future look for a brand new EPM website that will be easier to use, more informative, in short, worth looking at.

Thank you to all who have supported us by reading this newsletter, praying, and giving. It is beyond wonderful for me to be in this position.

~ John Sittser



SEA CLOUD II: THE WORLD'S FINEST SAILING YACHT



FIRST CENTURY VOYAGES PRESENTS:

Cities of St. Paul

June 21 - July 2, 2012

With Teachings by Rev. Dr. Earl Palmer
& Rev. Dr. John Yates

The travel experience of a lifetime.

Embark on a 12 day water and land excursion of Turkey, Greece, and Greek Islands. Retrace the steps of St. Paul and other New Testament figures while you learn from world-renowned teachers Earl Palmer and John Yates, a prominent leader in the Anglican Church of America. Let the land help bring the words to life. It is a truly 5 star experience, including time aboard the illustrious Sea Cloud II (pictured to the left). Hosted by David Spence at First Century Voyages, leader of over 100 tours, this will be an unforgettable voyage.

For more info, go to www.firstcenturyvoyages.com
Or call - (919) 381-5725

Annapolis, MD Earl had the privilege of spending Martin Luther King weekend at White Sulfur Springs for a retreat with some of the young men and women in the United States Naval Academy. The theme of the weekend retreat was *Living for Christ Through the Eyes of C.S. Lewis*. Earl describes these young midshipmen, many of whom are pictured below, as “the real salt of the earth.” See if you can find Earl in the crowd.



EARL PALMER MINISTRIES

1 Thessalonians 5:11

PO Box 85117
Seattle, WA 98145

EARL PALMER MINISTRIES

1 Thessalonians 5:11

Serving to Encourage and Build Up in Christian Faith

BOARD OF DIRECTORS

Tony Whatley, Chair	Susan Hutchison
Richard Greiling, Treasurer	George Nethercutt
Jackson Chao	Sue Nixon
Frank Haas	Gordon Stephenson
Scott Hardman	Dan Wilson

STAFF

John Sittser, Study Assistant/Intern
john@earlpalmer.org
Office Number: 206.524.3250

Mission Statement

EPM's mission statement comes from 1 Thessalonians 5:11 — "Serving to encourage and build up in Christian faith." These words from the Apostle Paul inspire our ministry of teaching, writing, and mentoring. First, we seek to mentor young theologians through our internship program and monthly theological dialogues. Live podcasts through *The Kindlings Muse* offer regular teaching and conversation for all ages to consider major Christian themes. EPM's wider ministry focuses primarily on encouraging pastors and giving a case for expositional worship.

If you have questions regarding Earl Palmer Ministries and its events, or to schedule an event, visit us at www.earlpalmer.org or e-mail us at info@earlpalmer.org.

If you know of others who would like to receive this newsletter, or if you would prefer not to receive this mailing, e-mail John at john@earlpalmer.org.

Your support makes this ministry happen. As we continue in this fourth year of ministry, we invite you to share in this outreach again with your prayers and your financial investment. To make a tax-deductible contribution, please send a check made out to Earl Palmer Ministries, PO Box 85117, Seattle, WA 98145, or electronically via PayPal at www.earlpalmer.org. On behalf of the EPM team, I thank you.

